



PINAKI
ROYCHOWDHURY
GLOBAL



INDUSTRY

- MINING & TECHNOLOGY
- EQUIPMENT TRADING
- BULK MATERIAL HANDLING
- FASHION INCUBATION
- FARM TECH
- SKILLING & PHILANTHROPY

PRG ON THE WEB

web : www.prglobal.co
email : corporate@prcgroup.in
phone : + 91 33 4003 21551 / 55
cellular : +91 90070 55566

COME OVER

PR GLOBAL
175 Block G, New Alipore, Kolkata 700 053
West Bengal, INDIA

Higher !

We must aspire.

Further !

We must reach into the
depths of possibilities.

Faster !

We must react to
change.

PR GLOBAL BRANDS



MECHANIC
MULTI BRAND SOLUTION



CREDO
CREDOFORU.COM



ABOUT PR GLOBAL

Pinaki Roychowdhury Global Group (PRG Group) is an emerging leader in industrial innovation, skill development, and social impact. With a diversified portfolio spanning mining technology, heavy equipment sales-service-rebuilding, fashion incubation and non-profit initiatives, PRC Global Group is positioned to drive value across multiple sectors. Headquartered in India, with global footprint at Dubai, Canada, Africa and East Europe, PRC Global Group is committed to excellence, sustainable practices, and responsible growth, with a clear path towards a future that has exponential growth opportunities within the domestic and foreign markets.

PRG Group is uniquely positioned to bring a diversified and sustainable portfolio to the public market. By integrating industrial expertise with social responsibility and a commitment to sustainable practices, PRC Global Group is set to attract investors who value innovation, resilience, and responsible growth. With a clear roadmap toward future readiness, PRC Global Group aims to unlock significant value for its shareholders and drive positive change in the industries and communities it serves.





WHAT WE DO

- Mining Technology & Services.
- Bulk Material Handling Technology.
- Equipment Trading.
- Fashion Incubation & Skilling.
- Corporate Marketing.
- Agri-technology.
- CSR Initiatives.

OUR ECO-SPACE

- KRASNY PROJECTS PVT.LTD.
- THE GLOBAL MACHINES LLC, DUBAI.
- IC-SURE PROJECTS MARKETING PVT LTD.
- CREDO CENTER OF EXCELLENCE
- PRG AGRO-TECH
- CREDO FOUNDATION





FOUNDER'S MESSAGE

At **PRG**, we are dedicated to delivering comprehensive solutions that span commodities, infrastructure, engineering, and technology. Our commitment to sustainable impact is reflected in our various initiatives, particularly through our CSR arm, the CREDO Foundation, which focuses on community empowerment and social responsibility through innovative skilling programs.

In the mining sector, we ensure ethical sourcing and advanced practices: **KRASNY Projects Private Limited** oversees national operations, while **The Global Machines LLC-Dubai** manages international projects.

IC-Sure Projects Marketing Private Limited, with the CREDO Centre of Excellence, champions the apparel sector by training rural citizens in garment production and equipping designers with entrepreneurial skills to foster sustainable fashion manufacturing. Our IT division provides complex hardware and software solutions, including robust e-commerce platforms.

PRG AGRI-TECH, Our commodity services encompass a broad spectrum—from agriculture and horticulture. Additionally, we support rural technology initiatives that promote scientific farming methods, assist MSMEs, enhance logistics, and develop edu-tech platforms for improved knowledge accessibility.

PRG, an integrated diversified Group, is positioned to expand into allied verticals creating a Global chain in Multi Brand Equipment Sales, Service and Managed services while also throttling ahead to create World class Fashion and Apparel global footprint.



CO-FOUNDER'S MESSAGE



PRG is focused into business ventures that support empowerment and contribute to the rural economic activities. Our projects are aligned towards the welfare of Women in particular as well as the under privileged in general.

CREDO Foundation: Touching Hearts, Spreading Smiles

At CREDO (Confederation of Rehabilitation, Empowerment & Daedal Organizations), we believe in building a sustainable ecosystem that empowers every individual to thrive, regardless of gender, economic, or social background. Founded as a charitable trust in 2019, CREDO has grown rapidly, dedicated to weaving a new economy where everyone can be part of the mainstream.

With 360 registered NGOs and entities under our umbrella, CREDO has invested over ₹50 million in projects that drive inclusive growth and skill development. Under our principal vision of creating an empowered society - to incorporate an organization specifically dedicated to implementing empowerment projects.

Through our work, CREDO is more than a foundation—it's a movement toward an inclusive future. We are committed to touching hearts, spreading smiles, and fostering empowerment through innovative vocational incubation.



OUR VISION

To be a global leader adding critical value to our clients while fostering innovation and delivering responsible, sustainable growth.

MISSION 02

To build and scale an ecosystem that integrates industrial expertise with responsible business practices.

MISSION 03

To maximize stakeholder value through disciplined growth and strategic expansion.

OUR MISSION

MISSION 01

To empower industries and communities through advanced technology, sustainable practices, and social impact initiatives.



MINING TECHNOLOGY



SERVICES:

Mining technology company with wide experience in:

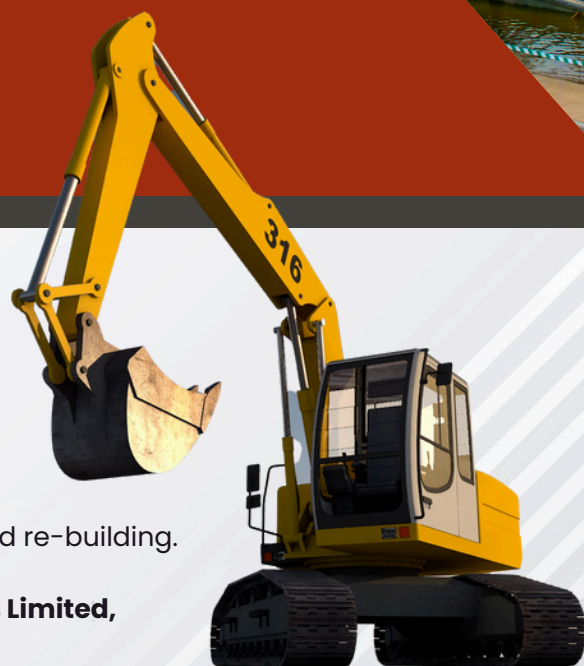
- Global equipment trading
- Mine development and operations
- Equipment operations, maintenance with spares and re-building.

Global advisor to a Universal MEP Projects & Engineers Limited, a TATA enterprise providing:

- Strategic business development
- Global sourcing
- Technical services with manpower

Associated with several Global and Indian mining and equipment trading companies:

- Intergrated Coal Mining Limited
- G.S.Atwal (Engineers) Pvt. Ltd
- Birla Corporation Ltd
- Sagmania Coal Mines Ltd.
- Siberian Giprosakht Mining University
- CETCO Ukraine
- Voltas Ltd
- Universal MEP Projects & Engineering Services Ltd.
- EMTA Coal Limited
- BG Mining & Movers
- Setlite Engineers Limited
- Thriveni Earthmovers Limited
- South West Equipment, Dubai



COMPANIES INVOLVED:

KRASNY PROJECTS PVT.LTD
THE GLOBAL MACHINES LLC-FZ
IC-SURE PROJECTS PVT.LTD





Mining Ecosystem

360° MINING

BESPOKE CURATED SERVICES

Mine infrastructure construction,
Human resource management,
Blasting, Excavation, Haul road & Dump management,
De-watering & Environmental management,
Rehabilitation & Resettlement,
HEMM purchase planning,
HEMM & Mine infrastructure maintenance and operations.

TECHNICAL SUPPORT

- Technical manpower
- Research and Analysis of mining operations
- Man- Machine Time synchronisation
- Re-building and supply of spares or assemblies
- Business development
- Global sourcing of technology partners.





MINING EQUIPMENT TRADING



Mining and Earthmoving Equipment Trading

We specialize in global equipment trading for the mining, construction, and earthmoving sectors, focusing on the 50-ton class and above. Our services include sales, service, and spares management to ensure optimal performance and uptime. We offer a wide range of heavy earth moving equipment for sale, rental, or lease.

With a UAE-based stockyard, we provide fast supply and refurbishment of quality machinery to meet global demands.

Our Product List:

- Dumpers (100 Ton & above)
- Tippers (25 ton & above)
- Excavators (4 Cum & above)
- Chain Dozers (400hp & above)
- Motor Graders (4 meter & above)
- Spare Parts

COMPANIES INVOLVED:

KRASNY PROJECTS PVT.LTD
THE GLOBAL MACHINES LLC-FZ

EQUIPMENT SERVICING

MULTI BRAND Equipment solutions

V-MECHANIC, our upcoming Multi brand Mining and Construction equipment Business Growth Partner (BGP) vertical offers the following services that accelerates the business opportunities for our clients:

- Sales, Service & Spares for Dumpers, Tippers, Trucks, Excavators, Dozers, Loaders, Graders.
- Complete Insurance & Under-writing services
- Equipment rentals with availability



MECHANIC
MULTI BRAND SOLUTION



BUSINESS GROWTH PARTNERSHIP (BGP)

We provide complete solutions to our clients that ensure that they focus on their operations:

- Annual Maintenance contracts for their fleet,
- Comprehensive insurance & risk management,
- Recovery and hassle-free accidental services,
- Business development through Joint Ventures,
- Access to technologies & global partnerships,
- Fleet rentals and leased asset deployment,
- Technical Human resource management.

RE-BUILDING

We leverage our in-house engineering, CAD and re-building division to maintain the best conditions for equipment by rebuilding of casting and forged assemblies.

Our partnerships with Globally reputed OEMs and specialists compliments our expertise



BULK MATERIAL HANDLING TECHNOLOGY



Bulk Material Handling Solutions & Equipment under PRG Group:

Bulk material handling encompasses the machinery, devices, and systems essential for handling, moving, storing, and processing substantial quantities of bulk materials. This equipment is integral to sectors such as mining, construction, agriculture, manufacturing, and logistics, where handling loose, granular, or free-flowing substances is routine. Core functions include material transport, storage, loading/unloading, and processing through various methods like crushing, grinding, and mixing.

Key Equipment & Solutions

- **Conveyors, Hoppers, Loaders, Crushers, and Dust Collection Systems:** These ensure efficient material flow, enhance productivity, and support seamless operations.
- **Retro-fitment & Service Enhancements:** Include repairs and reconditioning efforts to improve operational efficiency and longevity of equipment. Notable services:
 - Secondary Sizer repair, providing cost savings and enhancing durability.
 - Hard-facing fabrication on breaker plates to increase throughput and extend service life.
 - Bunker liner replacement, reducing downtime and optimizing performance.

COMPANIES INVOLVED:

KRASNY PROJECTS PVT. LTD.





AGRI-TECH PRG FARMS

Agri-Tech Initiatives under PR Global Agro Projects:

PR Global Agro Projects is transforming India's agricultural landscape with technology-driven farming, direct-to-market horticulture, and floriculture trading, creating sustainable growth opportunities for farmers nationwide.

- **Advanced Agri-Tech Solutions:** We provide precision farming tools, crop management systems, and post-harvest technologies that enhance both yield and quality, fostering sustainable agriculture.
- **Direct Farm-to-Market Linkages:** Our direct trading model connects farmers to high-value markets, cutting out intermediaries and boosting farmer revenues by up to 30%.
- **Community Empowerment:** With training and support for over 10,000 farmers, PR Global promotes rural resilience and improved livelihoods.



COMPANIES INVOLVED:

PRG AGRI-TECH

FASHION INCUBATION



India's First Ever Fashion Incubator under PRG Group:

CREDO Center of Excellence, India's first dedicated fashion incubator, is an initiative by PR Global. We're not just another skilling center—we're a game-changer in the world of fashion, business incubation, and community empowerment. Supported by the Apparel Home Furnishing Sector Skill Council, under the Ministry of Skill Development & Entrepreneurship, Government of India - our purpose is simple yet profound: to uplift disadvantaged communities, drive micro-entrepreneurship, and bring global attention to sustainable, socially responsible fashion.

Our Core Model:

- **Hub-and-Spoke Skilling Ecosystem:** By establishing regional centers, we expand skills, enhance production capabilities, and create market connections, ensuring scalability and broad reach.
- **Fashion Incubation:** We provide comprehensive support from training to market linkages, guiding aspiring designers and artisans through every step of their journey, transforming them into skilled, market-ready entrepreneurs.



COMPANIES INVOLVED:

IC-SURE PROJECTS MARKETING PVT.LTD
CREDO CENTER OF EXCELLENCE





MARKETING



Marketing Services under PRG:

PR Global's marketing division offers comprehensive end-to-end digital and physical marketing solutions designed to enhance brand visibility, market penetration, and consumer engagement across industries.

- **Digital Marketing & SEO:** For Corporate India, we build strong online presence through targeted social media campaigns, influencer partnerships, and SEO strategies to engage and grow target audiences effectively.
- **Experiential & Physical Marketing:** From nationwide product launches to impactful brand activations and strategic event management, we create immersive experiences that drive brand recognition.
- **Strategic Brand Positioning:** Our team crafts compelling brand narratives that resonate with audiences, aligning brand values with consumer expectations and emerging industry trends for maximum impact.

COMPANIES INVOLVED:
IC-SURE PROJECTS PVT.LTD





CREDO Foundation

A PRG CSR INITIATIVE

The CREDO Foundation, the CSR initiative under the PRG Group, serves as the think tank for all socially motivated projects within the organization. Committed to UN Sustainable Development Goals (UNSDG) and Environmental, Social, and Governance (ESG) standards, and certified with 80G and 12A, CREDO upholds transparency and social responsibility across its initiatives.

Through skill development, vocational training, and sustainable livelihood programs, CREDO empowers underserved communities nationwide. Its programs include mass skilling initiatives, food and beverage professional training, and tailoring courses, which equip participants with essential skills to establish self-sustaining income sources. Additionally, CREDO supports the production of handicrafts and artisanal goods, alongside edu-sports to promote physical activity and education.

Focused on youth and women empowerment, CREDO's programs foster financial independence and entrepreneurship, fostering resilience within marginalized communities. By aligning with corporate partners to meet CSR goals, CREDO designs impactful projects that deliver measurable community benefits. The Foundation also hosts knowledge-sharing events to further its mission for sustainable community development. To date, CREDO has impacted over 50,000 individuals, driving progress in skill development, women's empowerment, and youth entrepreneurship, creating a lasting positive impact.





CREDO CENTER OF EXCELLENCE LAUNCH

6th November 2024, at the Park Hotel, Kolkata

The ceremony seamlessly transitioned into the launch of the Credo Center of Excellence, led by Mr. Pinaki Roychowdhury. CREDO aims to create a supportive ecosystem for young entrepreneurs in Bengal, focusing on skill development and resources for starting businesses in the fashion industry. A key element of this initiative is the empowerment of marginalized women through skill development in handicrafts, establishing self-help groups, and creating a handicraft village for sustainable employment.

The launch highlighted the collaboration with the Apparel Made-ups and Home Furnishing Sector Skill Council, which operates under the Ministry of Skill Development and Entrepreneurship, Govt. of India. This partnership aims to bridge the skills gap in the apparel sector, where a projected shortage of 86 lakh trained professionals still exists, despite training efforts having benefited over 21 lakh individuals.

CREDO Founders Mr. Pinaki Roychowdhury and Mrs. Sudeshna Roychowdhury



A significant moment in the event was the unveiling of the Credo Center of Excellence logo, symbolizing the commitment to advancing education in fashion and entrepreneurship. Flagship courses, such as the Fashion Consultant Course, were introduced to address industry needs by enhancing sales skills alongside fashion knowledge, ultimately aiming to improve customer service and loyalty.





Paoli Dam

Versatile Actor



Neel Bhattacharya

Rising Star



Lahoma Bhattacharya

Youth Icon



Shree Ghatak Murthy

Social Icon



Abhishek Dutta

Fashion Guru



Firdausul Hasan

*Industry Leader in
Motion Pictures*



Pantaloons

*Most Loved Fashion
Brand of India*



MAX Fashion

*Most Promising Retail
Brand of India*





OUR TEAM



PINAKI ROYCHOWDHURY

The Founder of the PR Global enterprises



SURESHNA ROYCHOWDHURY

The Co-Founder of The PR Global enterprises.



USHOSHI SENGUPTA

Miss Universe-India 2010 & Global Brand Ambassador of PR Global enterprises.



RUKSAR SARKAR

Executive Assistant to PRG GROUP



PUJA SANTRA

Design & Production



SANCITA NASKAR

Financial control & Banking



DIPANWITA PAL CHOWDHURY

Law & Administration



ANNA NAYAK

Business Administration



RAIHAN HAQUE

Marketing & Logistics



FARHAT NASIM

Marketing & Exports



RUSHDA GAUHAR

Public Relations & Communications



ALAKNANDA DAS

Corporate Outreach



RUPALI DAN

Analyst



PRG HOUSE
175 Block G, New Alipore,
Kolkata 700 053, West Bengal
INDIA

LET'S TALK



+ 91 84200 55560



www.prcgroup.in



corporate@prcgroup.in

